

BIG HIT

Bristol Immunisation Group

Working together to improve the uptake of immunisations across Bristol

OUR VISION

The overall aim of BIG HIT is to challenge the local low uptake rates and to develop an outstanding local immunisation service that:

- leads on immunisation research
- Is responsive and flexible
- uses innovative technology to provide information

In Bristol, the rate of MMR uptake is 88% uptake of 2 doses.¹ We are currently experiencing an outbreak of measles due to low vaccine uptake.

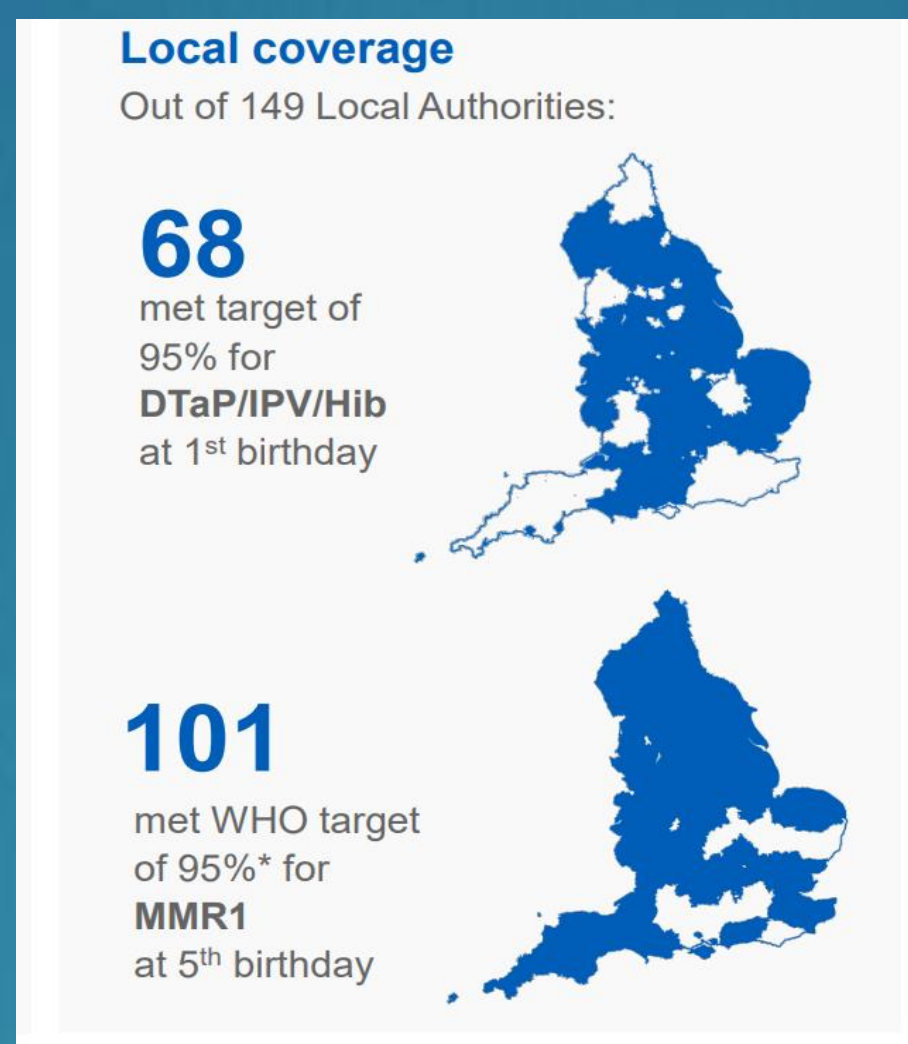
¹Public Health Outcomes Framework / Cover of Vaccination Evaluated Rapidly (COVER), 2015-16



WORKSTREAMS

- Research, information data, and technology
- School-based immunisation service to strengthen universal offer
- Identification and improvement of vulnerable areas of the programme, including improving training.

Feasibility work is underway for studies of new vaccines including those to protect infants against respiratory syncytial virus (bronchiolitis) and Group B streptococcus (an important cause of neonatal sepsis and meningitis).



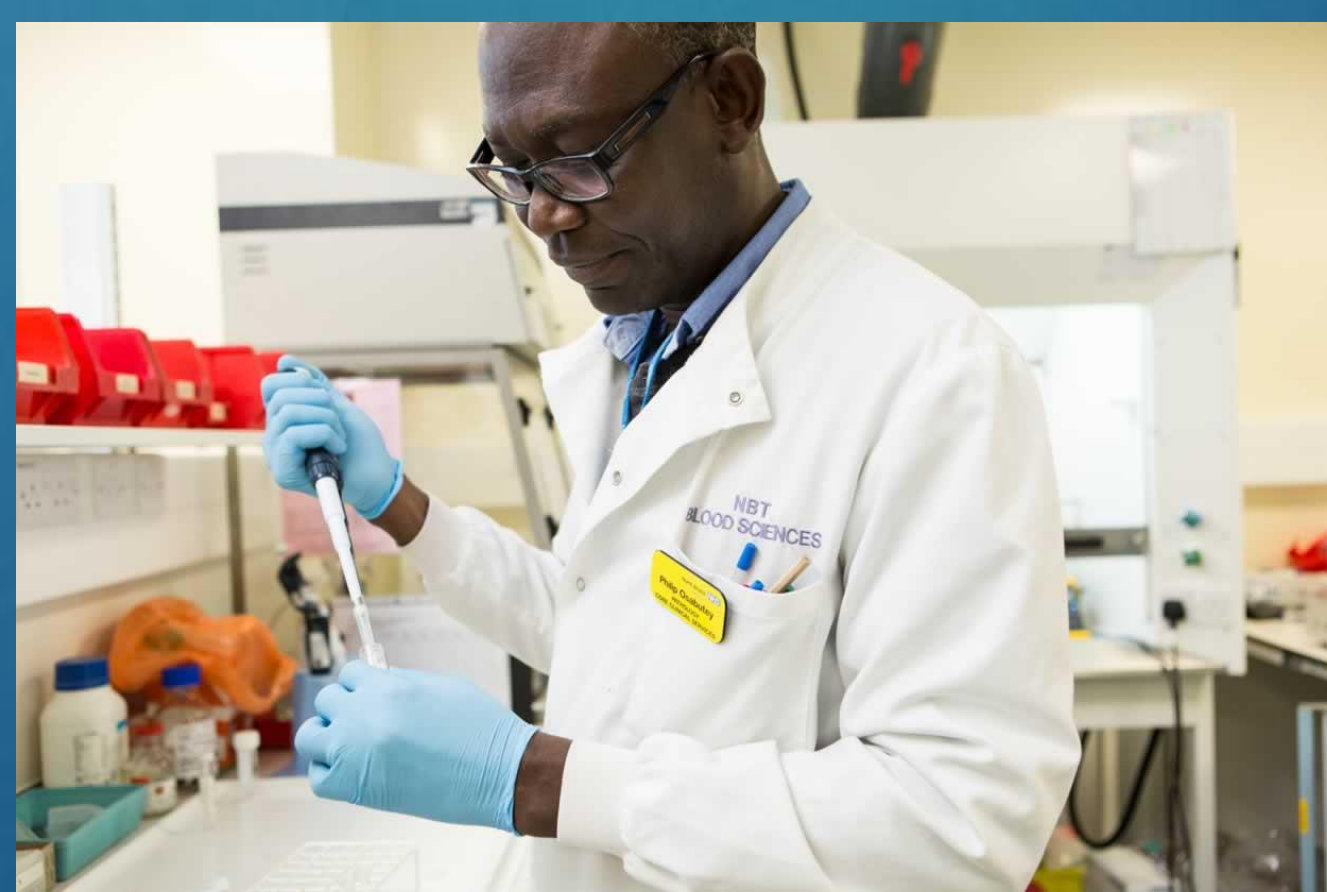
ACHIEVEMENTS

We have increased uptake of vaccines through the schools team and through maternity services.

'Due to the crisis in BCG availability, long waiting lists developed resulting in low uptake of the BCG vaccine (protecting against Tuberculosis), we facilitated a service change, training neonatal community staff to deliver the vaccine. This was a huge success, brought about by close collaborative working.'

We've established links to the Healthy Schools team to promote immunisations in schools, and to Children's Centres, to work with Bristol's most vulnerable communities.

We have undertaken a wide range of research, from studies into new vaccines, to testing the acceptability of immunisation programmes and developing new approaches.



WHAT'S NEXT - and OPPORTUNITIES FOR COLLABORATION

- Research – including into communication strategies with parents and young people, targeting most vulnerable groups; strengthening links with BME communities
- Training for parents and for staff in - schools – community health organisations – GP surgeries (including receptionists)
- Continuing to consult with young people, through YPAG



*For more information, please contact the ED HIT directors: **Adam Finn**, University of Bristol, **Julie Yates**, NHS England **Marion Roderick**, (UH Bristol)*